
POLICY NUMBER:	MSOD-003
POLICY SUBJECT:	SNOW PLOWING, SNOW REMOVAL & SANDING
DEPARTMENT:	OPERATIONS
EFFECTIVE DATE:	JULY 10, 2023
INITIAL EFFECTIVE DATE:	JANUARY 24, 2011
REVISION DATE (s):	

A. PRIORITY SNOW ROUTES

The Town will typically follow this process:

Snow Event Advisory - If approximately 10 centimeters (4") or more of snow is predicted in the forecast, The Town will issue a "Snow Event Advisory" on the Town's web site. This is meant to warn residents that snow is expected and vehicles parked in Snow Routes will have to be moved.

Snow Event declaration - If there is an accumulated snow fall of approximately 10 centimeters (4") or more, The Town may declare a Snow Event and Snow Route parking bans will be in effect for up to 72 hours or until The Town of Coaldale declares they are lifted.

Plowing – Town streets may be plowed on a continual basis for up to 72 hours after a parking ban has been declared.

Snow Route parking ban lifted – The Town will announce through the Town's web site when the Snow Route parking bans are lifted and residents can park on the roads as usual.

PLEASE NOTE – There may be times when it snows heavily, but Snow Route parking bans are not warranted. Snow Events are intended to support snow clearing operations, and will only be declared when there is an accumulation of approximately 10 centimeters (4") or more of snow on the roads. Snow accumulation and snow removal depend on a number of factors including forecast, budget, wind speed and road temperatures.

B) SNOW PLOWING

- 1) Snow plowing should commence on a prioritized basis within 24 hours when 10 cm (4") of snow has accumulated on the streets and a snow event has been declared by the Director of Operational Services. Each sequential Priority Route will be completed within 24 hours of the previous Route. The prioritized routes are to be established as per the attached map and in general as follows:

First Priority - Emergency Routes for Emergency Vehicle Access:

- a) opening of drifts to allow access/egress of emergency vehicles to/from all

areas of Town;

- b) plowing of snow along Emergency Routes and at protective services areas:
example: Firehall, Police Station, Town Office, Health Care Centre;

Second Priority - School Route Access: plowing of access to schools;

Third Priority - Industrial Road Access

Fourth Priority - Arterial and Collector Roads: plowing of all remaining arterial and collector roadways, drifted intersections, blocked streets and other designated areas as experience and circumstance dictate;

Fifth Priority - Drainage Routes: plowing of drainage routes. Plowing of drainage routes may take higher priority depending upon weather conditions (i.e.: melting snow);

Note: The Town, at the discretion of the CAO or designate, may undertake a greater level of snow clearing in the event or possibility of overland flooding within the Town.

Local Roads: local roadways will not be plowed until they become virtually impassable for passenger cars.

- 2) The initial priority will be to provide access through plowing to the center or side of the street as is applicable so as not to block emergency access, drainage, driveways, intersections, etc. Where plowed snow will block emergency vehicle access, the snow will be removed as soon as practical.
- 3) Snow will be plowed into windrows in the centre of the road, except where the road is adjacent to a park or other open space, when it will be plowed to the side of the road.
- 4) Intersections will be cleared of windrows as soon as practically possible following the completion of plowing.

There is joint responsibility for snow plowing on 20th Street/Highway 845. Plowing of the travel lanes is the responsibility of the Provincial Government. Plowing of the parking lanes is the Town's responsibility.

C) SNOW REMOVAL

Snow Removal will commence as soon as practically possible once the snow plowing priorities have been completed. Removal of snow will concentrate on the plowed priority routes followed by the drainage routes. Warm weather conditions may override this consideration in favour of first removing snow from the designated drainage streets. Snow removal will otherwise progress as follows:

- 1) 20th Avenue, 13th Street, 11th Street, 23 Avenue and Downtown thoroughfares.
- 2) Snow Removal along 20th Street (Highway 845) is shared by the Town and the

Province on a 50/50 basis¹.

- 3) All other windrowed routes as required, mail box areas, rutted intersections, Sportsplex, Library, etc.
- 4) Additional plowing and removal as and where required.

D) SANDING

Sanding may commence when streets become slippery due to ice or packed snow. Traffic volumes will be considered when determining if sanding is required. Sanding will be undertaken on the following priority basis as shown on the attached map:

- 1) 20th Avenue and downtown intersections, all intersections accessing the Highways 3 and 845, school intersections.
- 2) All other controlled intersections (Stop & Yield signs) as conditions and circumstances require.

E) SNOW FENCES

Snow fences are to be installed as experience and circumstance dictate as shown on the attached map to prevent drifting snow onto roadways where such drifting would render the roadway impassible. Snow fencing will not be installed to protect driveways.

F) SIDEWALKS

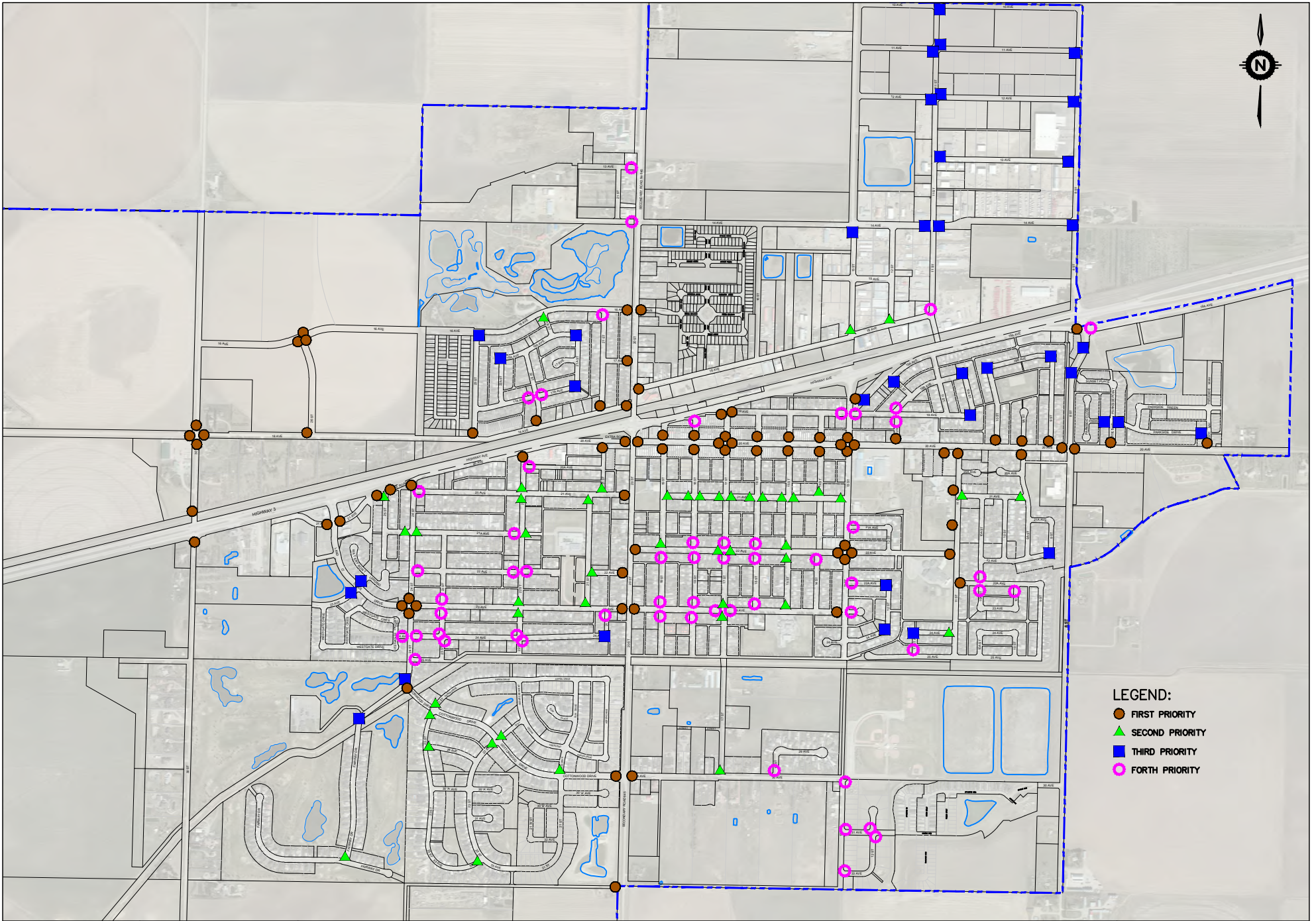
The Town shall clear snow from sidewalks abutting Town owned property after each snowfall as per the requirements of the latest version of the bylaw governing the "Removal of Ice and Snow from Sidewalks". If icy conditions exist de-icing chemicals and/or sand may be applied to affected areas.

G) POLICY REVIEW

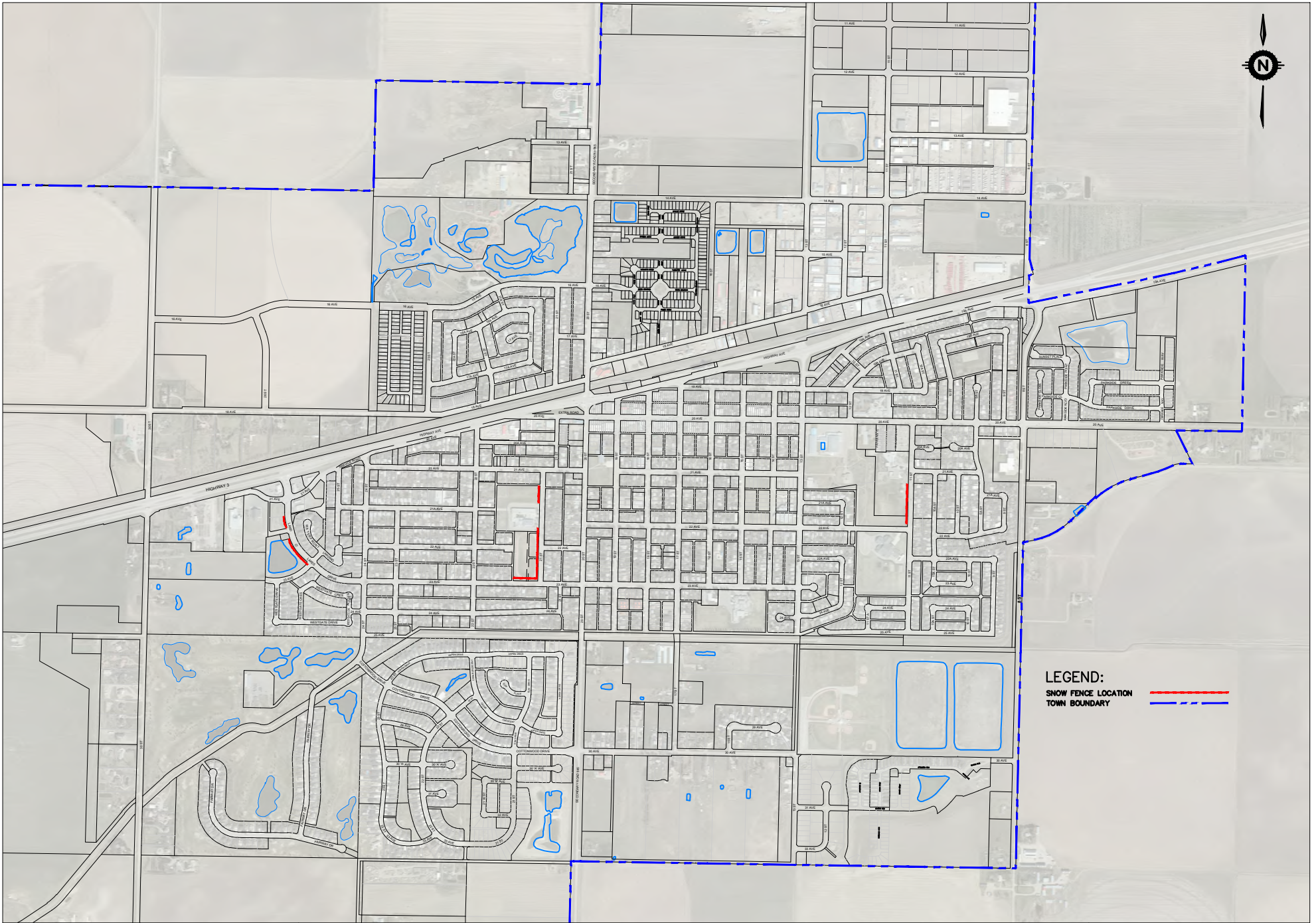
This policy will be reviewed by the Operations Department on an annual basis.

Attachments: Snow Plowing Priorities Map
Sanding Priorities Map
Snow Fencing Location
Map

¹ Alberta Transportation, Highway Maintenance Guidelines and Level of Service Manual, June 14, 2000.



- LEGEND:**
- FIRST PRIORITY
 - ▲ SECOND PRIORITY
 - THIRD PRIORITY
 - FORTH PRIORITY



LEGEND:
SNOW FENCE LOCATION ————
TOWN BOUNDARY - - - - -

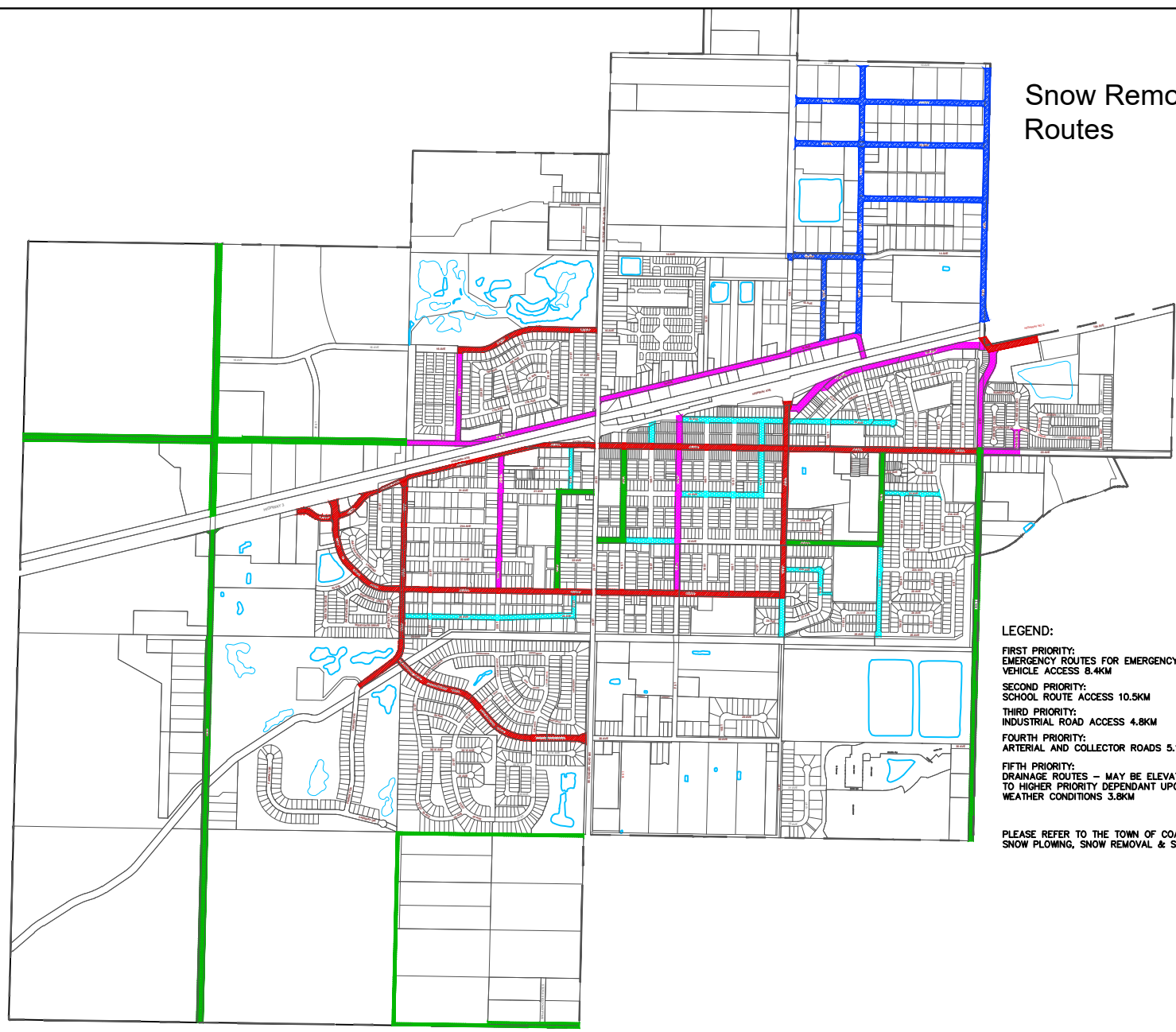
SNOW FENCE LOCATIONS

DATE: 13/06/2023

DWG No. 001



Snow Removal Routes



- LEGEND:**
- FIRST PRIORITY:
EMERGENCY ROUTES FOR EMERGENCY
VEHICLE ACCESS 8.4KM —
 - SECOND PRIORITY:
SCHOOL ROUTE ACCESS 10.5KM —
 - THIRD PRIORITY:
INDUSTRIAL ROAD ACCESS 4.8KM —
 - FOURTH PRIORITY:
ARTERIAL AND COLLECTOR ROADS 5.1KM —
 - FIFTH PRIORITY:
DRAINAGE ROUTES – MAY BE ELEVATED
TO HIGHER PRIORITY DEPENDANT UPON
WEATHER CONDITIONS 3.8KM —

PLEASE REFER TO THE TOWN OF COALDALE'S
SNOW PLOWING, SNOW REMOVAL & SANDING POLICY